


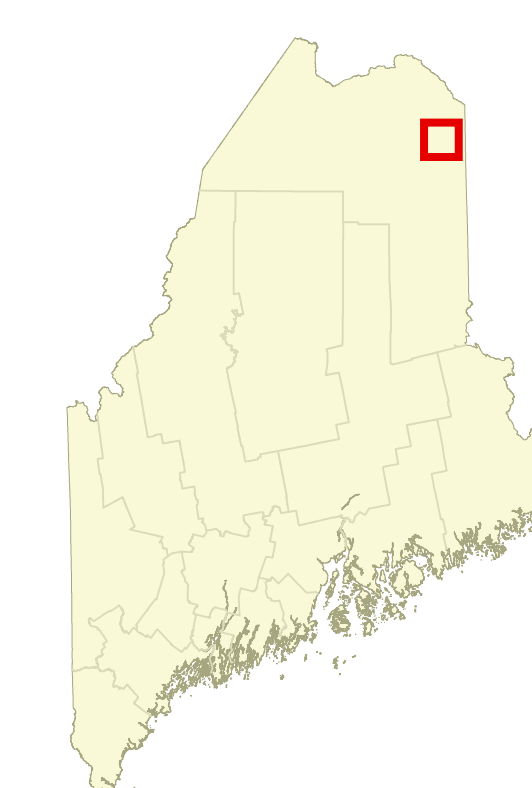


equips Maine communities, landowners, and conservation partners with tools to protect, restore, and connect important habitats and ecosystems in a changing climate.

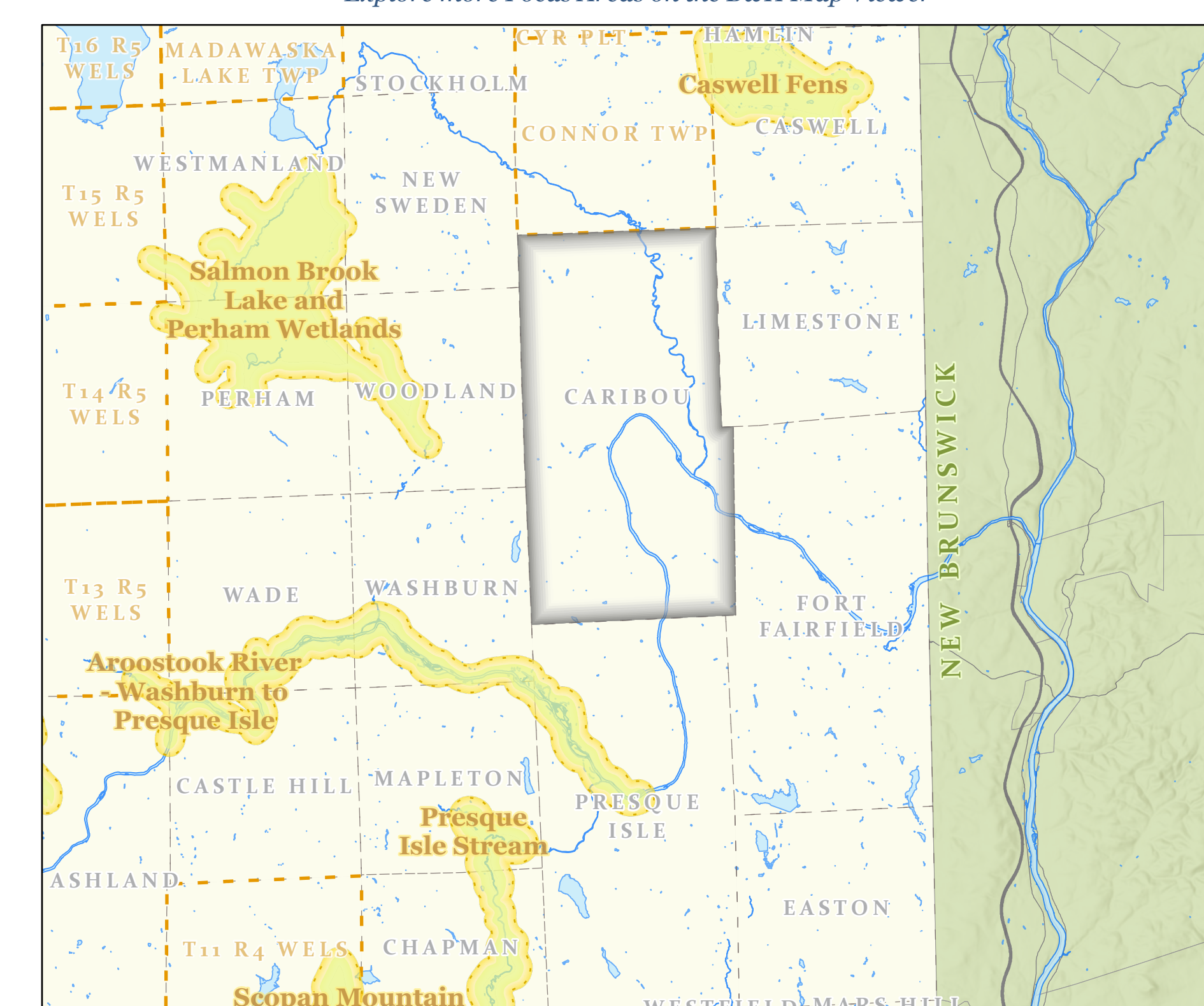
Habitat Connectivity

Conserved Lands, Undeveloped Habitat Blocks & Habitat Connectors

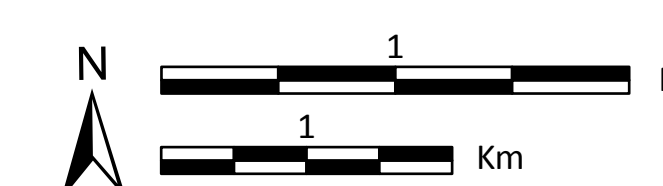
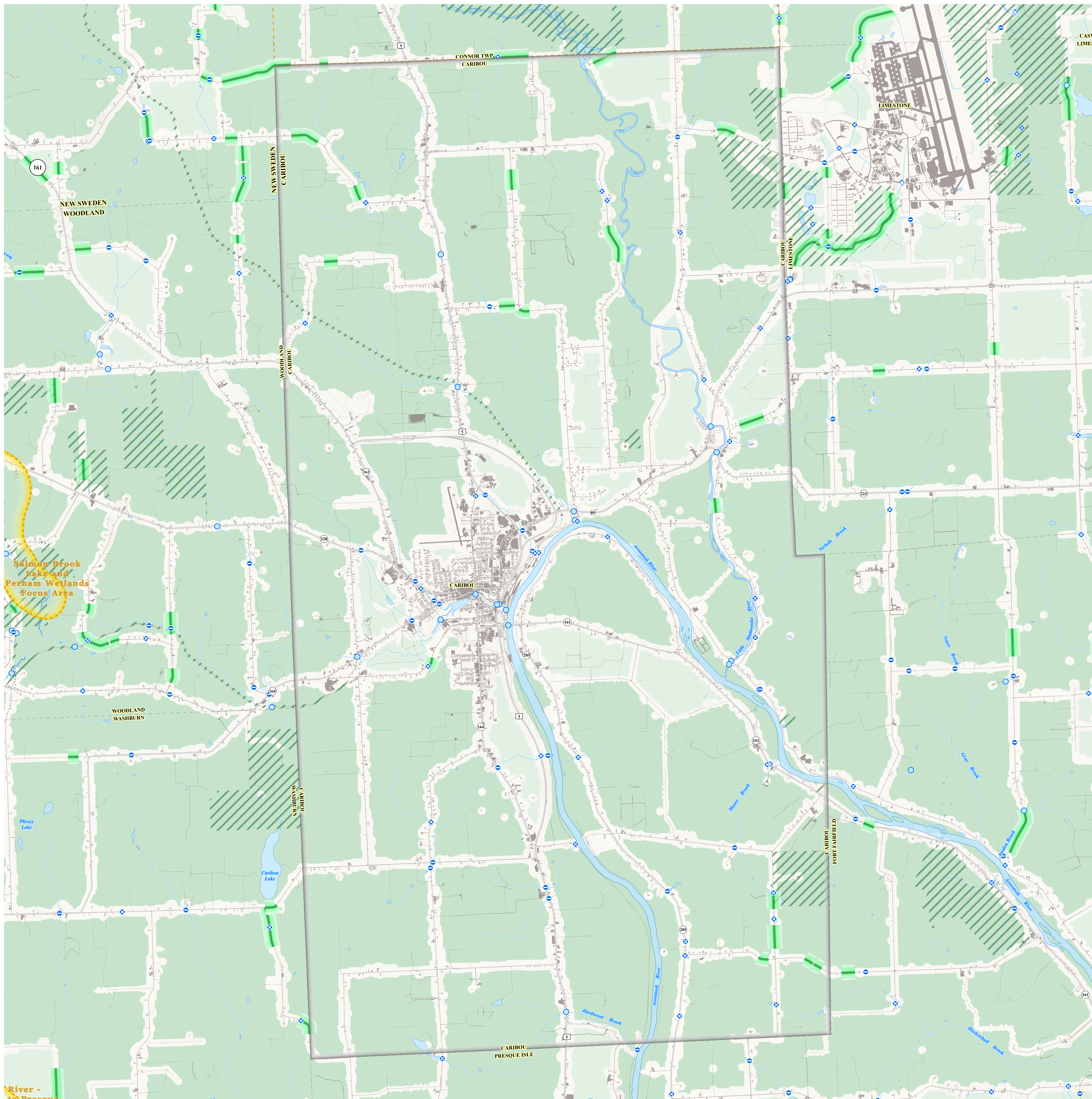
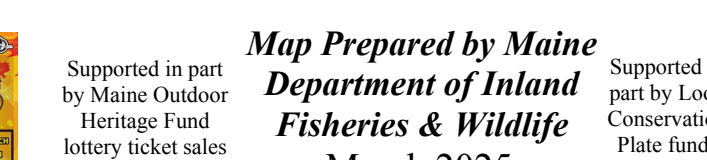
This map is nonregulatory and is intended for planning purposes only


**Fee and Easement
Conservation Land**

[Explore more Focus Areas on the BwH Map Viewer](#)



FOCUS AREAS & HABITAT CONNECTORS
Beginning with Habitat (2023)
MAINE STREAM HABITAT VIEWER CROSSINGS
ME Dep. of Inland Fisheries and Wildlife (2023)



Scale: 1:26,000
Projection: UTM 11
Datum: NAD 1983